

OTTO[®]

NEW PRODUCT BULLETIN

MINIATURE HALL EFFECT JOYSTICK

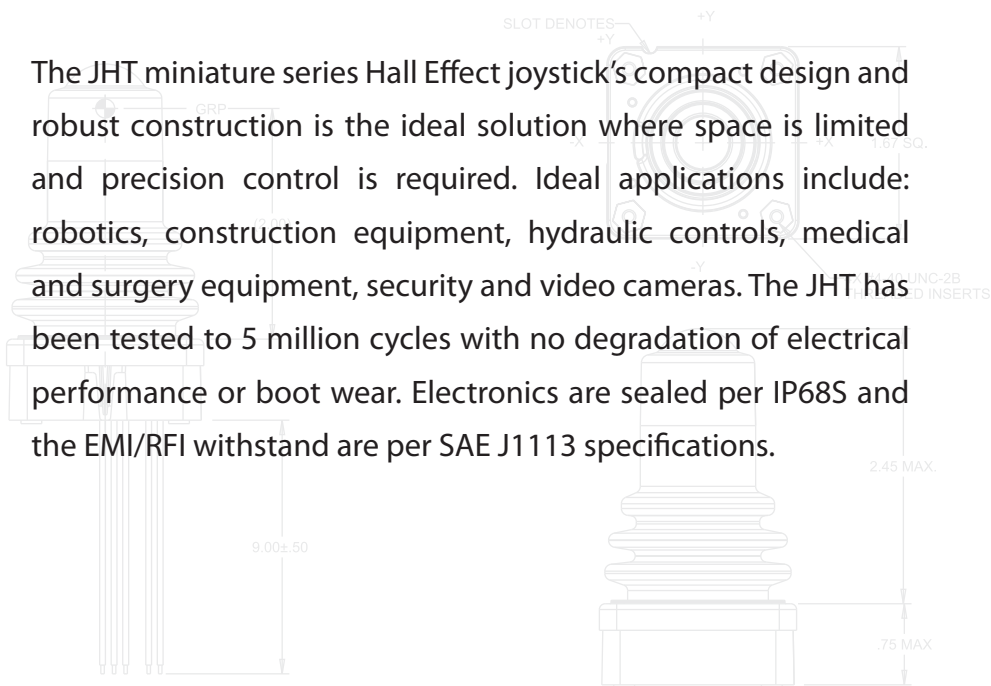
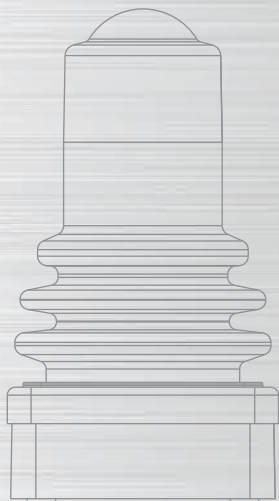
JHT
MINI
JOYSTICK

Features:

- Compact design excellent for armrest and panel mounting
- Proven contactless analog output Hall Effect technology
- 5 million operational cycles in all directions
- Electronics sealed to IP68S
- Single or omni directional and preferred feel options available
- RoHS & WEEE compliant



The JHT miniature series Hall Effect joystick's compact design and robust construction is the ideal solution where space is limited and precision control is required. Ideal applications include: robotics, construction equipment, hydraulic controls, medical and surgery equipment, security and video cameras. The JHT has been tested to 5 million cycles with no degradation of electrical performance or boot wear. Electronics are sealed per IP68S and the EMI/RFI withstand are per SAE J1113 specifications.



OTTO[®]
Expect Excellence.

www.ottoexcellence.com

Phone: 847-428-7171

© 2011 OTTO Engineering, Inc.
© OTTO and the OTTO Expect Excellence logo
are registered trademarks of OTTO Engineering, Inc.

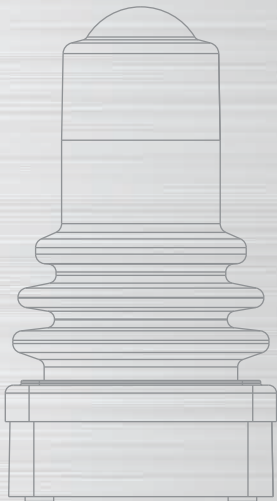
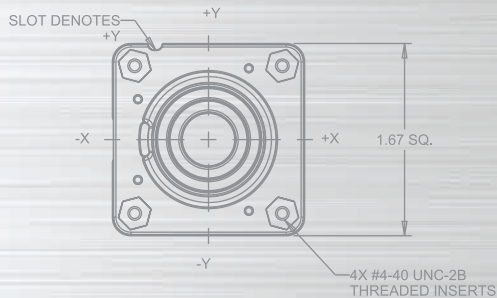
All rights reserved. Publication 2012-05

OTTO[®]

NEW PRODUCT BULLETIN

MINIATURE HALL EFFECT JOYSTICK

JHT
MINI
JOYSTICK



OTTO[®]
Expect Excellence.

www.ottoexcellence.com

Phone: 847-428-7171

Standard Characteristics/Ratings:

GENERAL:

Sensor Type: Hall Effect analog, factory programmed ground and supply line break detection; over voltage and reverse voltage protection

Design: Contactless sensing

ELECTRICAL RATINGS: 5V @ 20°C

Electrical	Units	Min	Typ	Max
Supply Voltage	VDC	4.5	5	5.5
Output Voltage +Y, -Y, +X, -X 0° Deflection	VDC @ 5V Vcc	2.25	2.5	2.75
Output at Full Travel -X, -Y Direction	VDC @ 5V Vcc	0.25	0.5	0.75
Output at Full Travel +X, +Y Direction	VDC @ 5V Vcc	4.25	4.5	4.75
Supply Current* (B = 0, Vcc = 5V, Io = 0)	mA	N/A	10	12
Output Impedance	kΩ	N/A	1	N/A

*Single output per axis. Dual axis per output available. Supply current 20mA typical.

MECHANICAL:

Joystick Mechanical Life: 5,000,000 cycles in all directions

Travel Angle: 18° min to 22° max, 20° typical

Overtravel Angle: 0.5° min to 1.5° max, 1° typical

Joystick Operating Force: With bellows, at grip 0.5 lb. min to 1.5 lbs. max over temperature range

P9 Operating Force: @20°C 8 oz min to 16 oz max, 12 oz typical

ENVIRONMENTAL:

Operating Temp Range: -40°C to +85°C

Drop: 1 meter max to concrete

Seal: Electronics seal to IP68S

RFI/EMI: Withstand per SAE J1113

MATERIALS:

Housing: Thermoplastic, black

Bellows: Silicone, black. Additional materials available, contact factory.

Wires: 24 AWG (19/36) per MIL-W-16878

© 2011 OTTO Engineering, Inc.
© OTTO and the OTTO Expect Excellence logo are registered trademarks of OTTO Engineering, Inc.

All rights reserved. Publication 2012-05